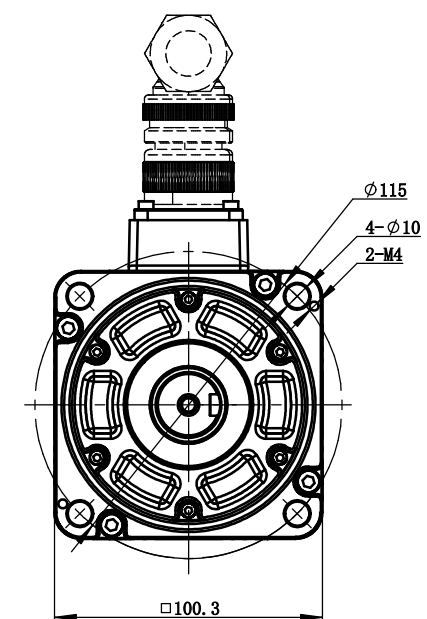
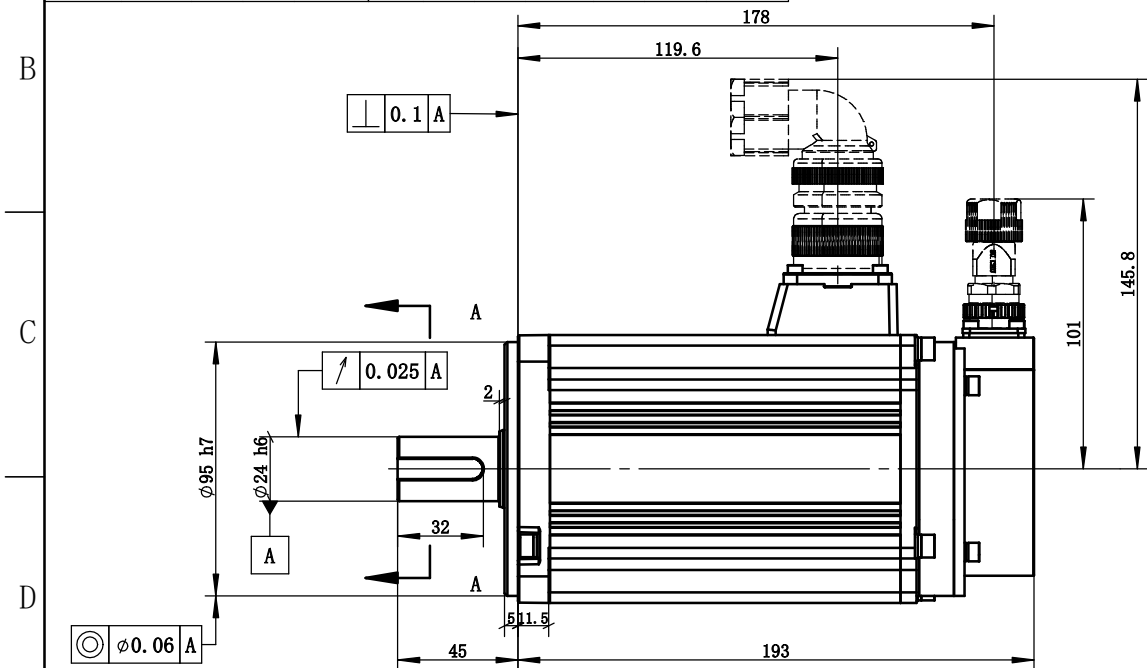
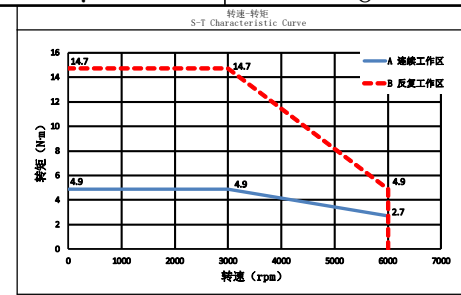
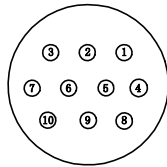
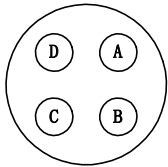
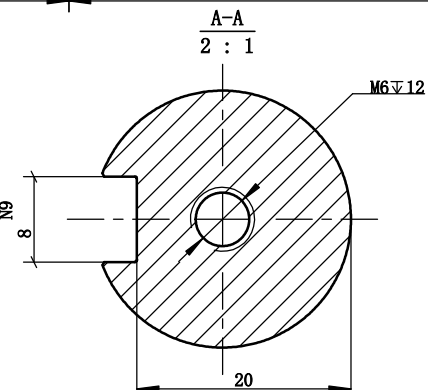


动力引出线 Power Connector				编码器引出线 Encoder Connector							
位号 Terminal Number	A	B	C	D	2	3	4	5	6	7	10
颜色 Color	蓝 blue	黑 black	棕 brown	黄绿 yellow green	红 red	黑 black	绿 green	绿黑 green black	蓝 blue	蓝黑 blue black	屏蔽层 shielding layer
定义 Definition	#	V	U	PE	5V	GND	485+	485-	电池+ cell+	电池- cell-	屏蔽线 screening wire



电机参数 Electric Machine Parameter	
型号 Specification and Type	MS6L-100TH30B2-21P5
规格 Specification of Inertia	超长惯量
额定功率 Rated Power	1.5
额定转矩 Rated Torque	4.9
瞬时最大转矩 Instantaneous Maximum Torque	14.7
额定电流 Rated Current	9.5
瞬时最大电流 Instantaneous Maximum Current	28.5
额定转速 Rated Rotation Speed	3000
最高转速 Maximum Rotation Speed	6000
转动惯量 Rotor Moment of Inertia	$2550 \times 10^{-7}$
电压等级 Voltage Level	220V
编码器规格 Specification of The Encoder	23bit
径向允许负载 Radial allowable load	686
轴向允许负载 Axial allowable load	196
耐压等级 Pressure Class	1500V 60s
绝缘电阻 Insulation Resistance	100MΩ DC500V以上 More than 100MΩ DC500V
防护等级 Class of Insulation	F
防护等级 Protection Level	IP67 (不含轴端) IP67 (Exclude Shaft End)
使用环境温度 Humidity of Use Environment	20%~90%RH (不结露) 20%~90%RH (Non-dewfall)
使用环境温度 Operating Ambient Temperature	-10℃~40℃ (不结露) -10℃~40℃ (Non-frozen)
储存湿度 Storage Humidity	20%~90%RH (不结露) 20%~90%RH (Non-dewfall)
储存温度 Storage Temperature	-20℃~60℃
冷却方式 Cooling Type	自然冷却 Natural Cooling



注：拿取电机应手握电机壳体本体，严禁拉拽电动力线、编码器引出线。  
严禁敲打电机任何位置，轻拿轻放。

Note: Take the motor should hold the motor shell body. It is strictly prohibited to pull the power line of the motor and the lead line of the encoder. It is strictly prohibited to tap the motor, take and put it lightly.

1	新归档						
版本 Edition	更改方式 Modifies of the change	日期 Date	签字 Signature	更改说明 Description of the change			
设计 Designed			标准化 Standardized	阶段标记 Stage Mark	版本 Edition	重量 Weight	比例 Scale
校对 Proofread			会签 Countersign		B	1	5.9Kg
审核 Checked			会签 Countersign				1:2
工艺 Processed			批准 Approved	共 1 张 第 1 张 Page 1 of 1			

**XINJE** 无锡信捷电气股份有限公司  
Wuxi Xinje Electric Co., Ltd

1.5kW伺服电机  
MS6L-100TH30B2-21P5

