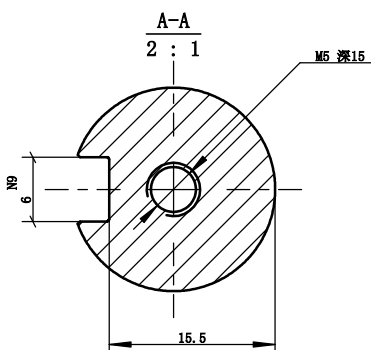
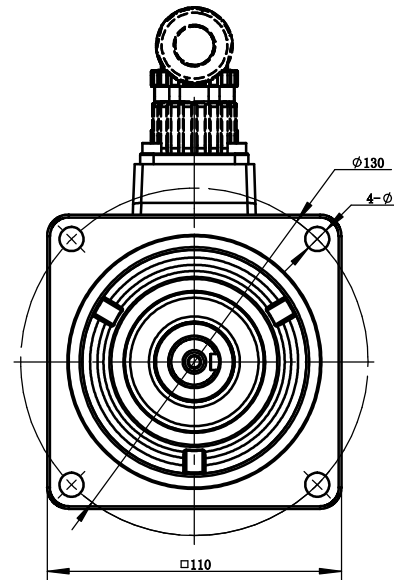
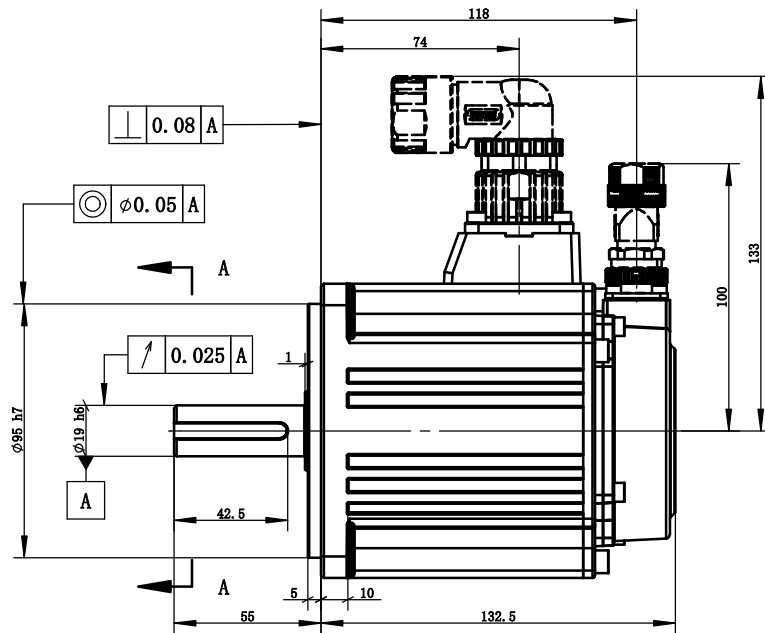
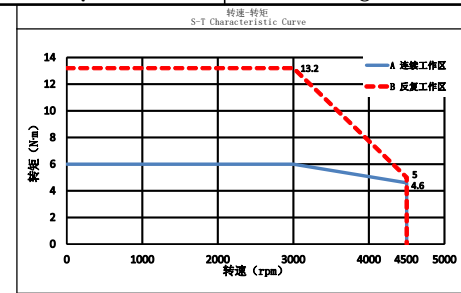
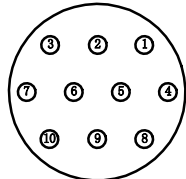
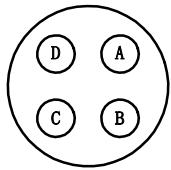


动力引出线 Power Connector				编码器引出线 Encoder Connector							
位号 Terminal Number	A	B	C	D	2	3	4	5	6	7	10
颜色 Color	蓝 blue	黑 black	棕 brown	黄绿 yellow green	红 red	黑 black	绿 green	绿黑 green black	蓝 blue	蓝黑 blue black	屏蔽层 shielding layer
定义 Definition	W	V	U	PE	5V	GND	485+	485-	电池+ cell+	电池- cell-	屏蔽线 screening wire



电机参数 Electric Machine Parameter	
型号 Specification And Type	MS6G-110CN30B2-21P8
惯量规格 Specification Of Inertia	中惯量
额定功率kW Rated Power	1.8
额定转矩·m Rated Torque	6
瞬时最大转矩·m Instantaneous Maximum Torque	13.2
额定电流A Rated Current	9
瞬时最大电流A Instantaneous Maximum Current	20
额定转速rpm Rated Rotation Speed	3000
最高转速rpm Maximum Rotation Speed	4500
转动惯量kg·m² Rotor Moment Of Inertia	6160 × 10 ⁻⁷
电压等级V Voltage Level	220
编码器规格 Specification Of The Encoder	19bit
径向允许负载 Radial allowable load	392
轴向允许负载 Axial allowable load	147
耐压等级 Pressure Class	1500V 60S
绝缘电阻 Insulation Resistance	100MΩ DC500V以上 More Than 100MΩ DC500V
绝缘等级 Class Of Insulation	F
防护等级 Protection Level	IP67 (不含轴端)
使用环境湿度 Humidity Of Use Environment	20%~90%RH (不结露)
使用环境温度℃ Operating Ambient Temperature	-10℃~40℃ (不结露)
储存湿度RH Storage Humidity	20%~90%RH (不结露)
储存温度℃ Storage Temperature	-20℃~60℃
冷却方式 Cooling Type	自然冷却 Natural Cooling

注：拿取电机应手握电机壳体本体，严禁拉拽电动力线、编码器引出线。
严禁敲打电机任何位置，轻拿轻放。

Note: Take the motor should hold the motor shell body. It is strictly prohibited to pull the power line of the motor and the lead line of the encoder. It is strictly prohibited to tap the motor, take and put it lightly.

1 新归档				XINJE 无锡信捷电气股份有限公司 Wuxi Xinje Electric Co., Ltd.			
版本 Edition	更改方式 Modality of the change	日期 Date	签字 Signature	更改说明 Description of the change			
设计 Designed		标准化 Standardized		阶段标记 Stage Mark	版本 Edition	重量 Weight	比例 Scale
校对 Proofread		会签 Countersign			B	1	4.7Kg 1:2
审核 Checked		会签 Countersign		共 1 张 第 1 张 Page 1 of 1			
工艺 Processed		批准 Approved		1.8kW伺服电机 MS6G-110CN30B2-21P8			