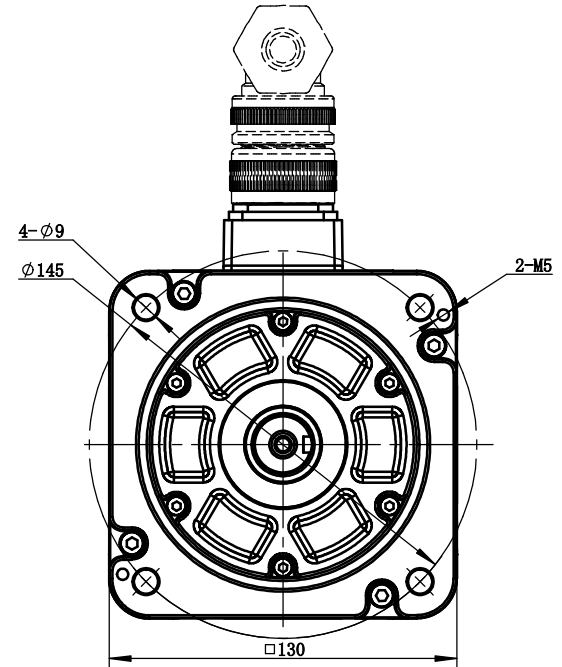
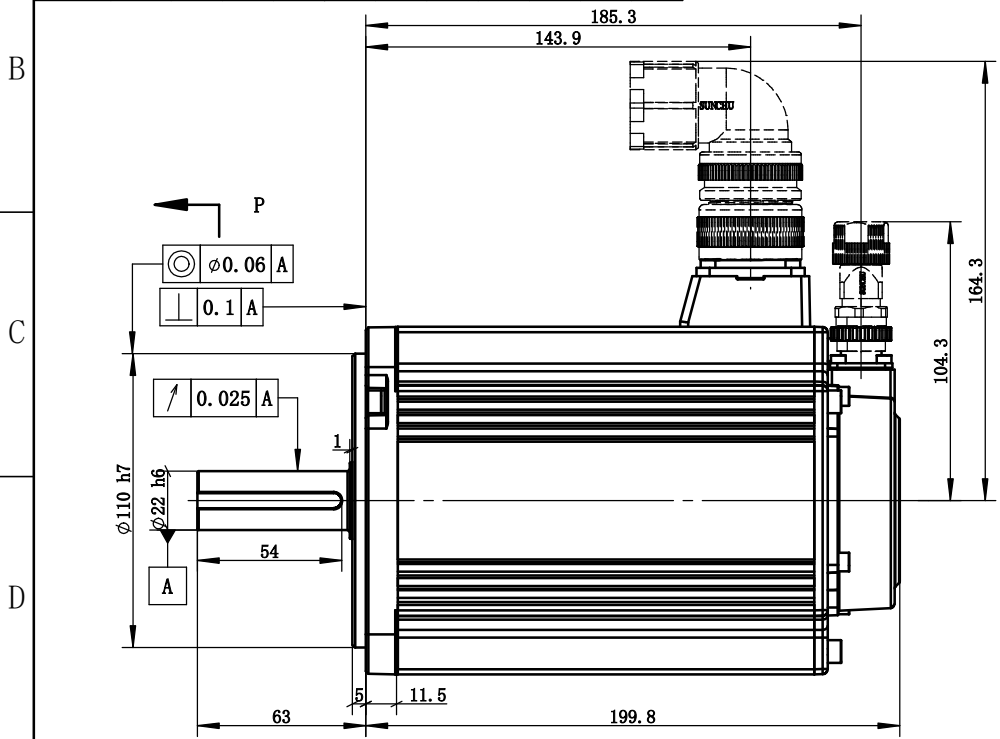
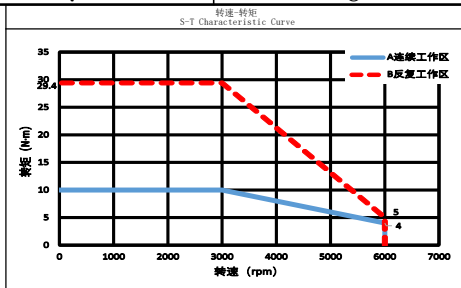
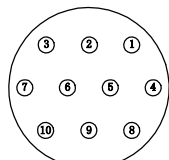
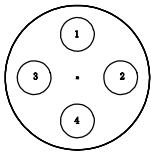
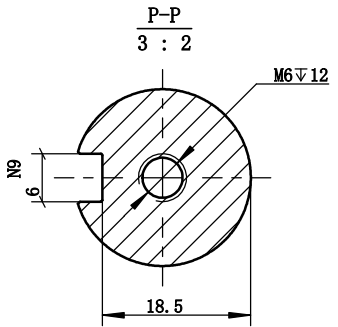


动力引出线 Power Connector					编码器引出线 Encoder Connector						
位号 Terminal Number	1	2	3	4	2	3	4	5	6	7	10
颜色 Color	黄绿 yellow-green	棕 brown	黑 black	蓝 blue	红 red	黑 black	绿 green	绿黑 green-black	蓝 blue	蓝黑 blue-black	屏蔽层 shielding layer
定义 Definition	PE	U	V	W	SV	GND	485+	485-	电池+ cell+	电池- cell-	屏蔽线 shielding wire



电机参数 Electric Machine Parameter		
型号 Specification And Type	MS6S-130CN30E2-43PO	
惯量规格 Specification Of Inertia	低惯量 Low Inertia	
额定功率kW Rated Power	3.0	
额定转矩·m Rated Torque	9.8	
瞬时最大转矩·m Instantaneous Maximum Torque	29.4	
额定电流A/m Rated Current	9.2	
瞬时最大电流A/m Instantaneous Maximum Current	29.7	
额定转速rpm Rated Rotation Speed	3000	
最高转速rpm Maximum Rotation Speed	6000	
转动惯量kg·m² Rotor Moment Of Inertia	5870x10 ⁻⁷	
电压等级V Voltage Level	380	
编码器规格 Specification Of The Encoder	19bit	
径向允许负载 Radial allowable load	980	
轴向允许负载 Axial allowable load	392	
耐压等级 Pressure Class	1800V 60S	
绝缘电阻 Insulation Resistance	100MΩ DC500V以上 More Than 100MΩ DC500V	
绝缘等级 Class Of Insulation	F	
防护等级 Protection Level	IP 67 (不含轴端) IP 67 (Exclude Shaft End)	
使用环境湿度 Humidity Of Use Environment	20%~90%RH (不结露) 20%~90%RH (Non-dewfall)	
使用环境温度℃ Operating Ambient Temperature	-10℃~40℃ (不结露) -10℃~40℃ (Non-frozen)	
储存湿度RH Storage Humidity	20%~90%RH (不结露) 20%~90%RH (Non-dewfall)	
储存温度℃ Storage Temperature	-20℃~60℃	
冷却方式 Cooling Type	自然冷却 Natural Cooling	



注：拿取电机应手握电机壳体本体，严禁拉拽电机动力线、编码器引出线。
严禁敲打电机任何位置，轻拿轻放。

Note: Take the motor should hold the motor shell body. It is strictly prohibited to pull the power line of the motor and the lead line of the encoder.
It is strictly prohibited to tap the motor, take and put it lightly.

1	新归档						
版本 Edition	更改方式 Modality of the change	日期 Date	签字 Signature	更改说明 Description of the change			
设计 Designed			标准化 Standardized		阶段标记 Stage Mark	版本 Edition	重量 Weight
校对 Proofread			会签 Countersign			B	1
审核 Checked			会签 Countersign				11.9kg
工艺 Processed			批准 Approved		共 1 张	第 1 张	Page 1 of 1

XINJE 无锡信捷电气股份有限公司
Wuxi Xinje Electric Co., Ltd

3.0kW伺服电机
MS6S-130CN30E2-43PO

