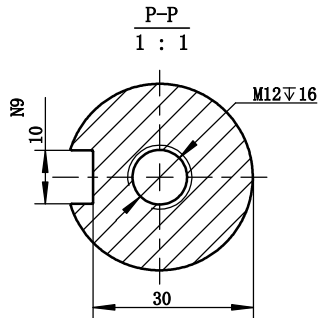
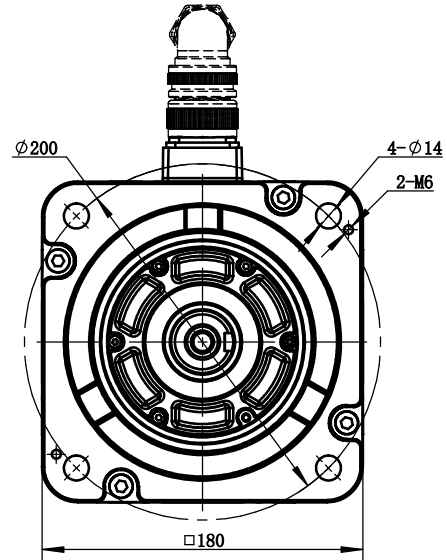
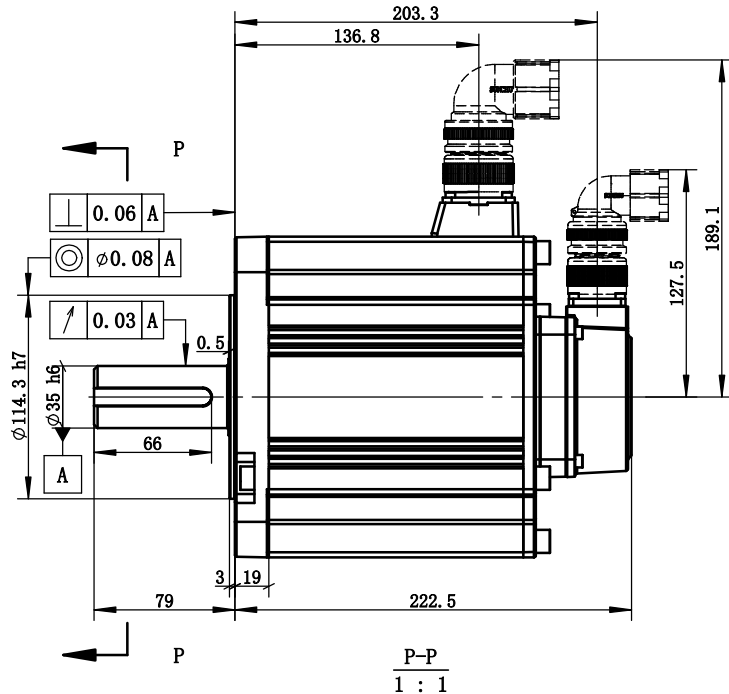
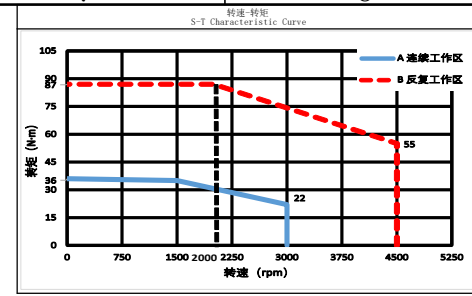
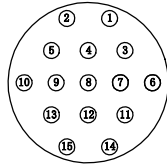
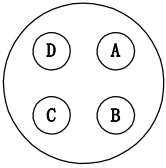


动力引出线 Power Connector					编码器引出线 Encoder Connector						
位号 Terminal Number	A	B	C	D	1	3	4	6	7	8	9
颜色 Color	黄绿 yellow-green	蓝 blue	黄 yellow	红 red	屏蔽层 shielding wire	橙 orange	蓝 blue	灰 gray	棕 brown	红 red	绿 green
定义 Definition	PE	W	V	U	屏蔽线 shielding wire	485-	485+	GND	电池- cell-	SV	电池+ cell+



电机参数 Electric Machine Parameter	
型号 Specification and Type	MS6G-180TH15E2-45P5
惯量规格 Specification Of Inertia	中惯量 Moment Of Inertia
额定功率kW Rated Power	5.5
额定转矩·m Rated Torque	35
瞬时最大转矩·m Instantaneous Maximum Torque	87.5
额定电流A Rated Current	20.5
瞬时最大电流A Instantaneous Maximum Current	51.25
额定转速rpm Rated Rotation Speed	1500
最高转速rpm Maximum Rotation Speed	3000
转动惯量·kg·m² Rotor Moment of Inertia	91360×10 ⁻⁷
电压等级 Voltage Level	380
编码器规格 Specification Of The Encoder	23bit
径向允许负载N Radial allowable load	1764
轴向允许负载N Axial allowable load	588
耐压等级 Pressure Class	1800V 60S
绝缘电阻 Insulation Resistance	100MΩ DC500V以上 More than 100MΩ DC500V
防护等级 Class Of Insulation	F
防护等级 Protection Level	IP 67 (不含轴端) IP 67 (Exclude Shaft End)
使用环境湿度 Humidity Of Use Environment	20%~90%RH (Non-dewfall)
使用环境温度℃ Operating Ambient Temperature	-10℃~40℃ (不结冰) -10℃~40℃ (Non-frozen)
储存湿度RH Storage Humidity	20%~90%RH (不结露) 20%~90%RH (Non-dewfall)
储存温度℃ Storage temperature	-20℃~60℃
冷却方式 Cooling Type	自然冷却 Natural Cooling

注：拿取电机应手握电机壳体本体，严禁拉拽电机电力线、编码器引出线。
严禁敲打电机任何位置，轻拿轻放。

Note: Take the motor should hold the motor shell body. It is strictly prohibited to pull the power line of the motor and the lead line of the encoder.
It is strictly prohibited to tap the motor, take and put it lightly.

1 新归档		更改方式		日期	签字	更改说明		
设计 Designed		标准化 Standardized				阶段标记 Stage Mark	版本 Edition	
校对 Proofread		会签 Countersign				B	1	
审核 Checked		会签 Countersign					22.36kg	
工艺 Processed		批准 Approved				共 1 张	第 1 张	
							重量 Weight	比例 Scale
							22.36kg	1:3
							5.5kW伺服电机	
							MS6G-180TH15E2-45P5	

XINJE 无锡信捷电气股份有限公司
Wuxi Xinje Electric Co., Ltd

