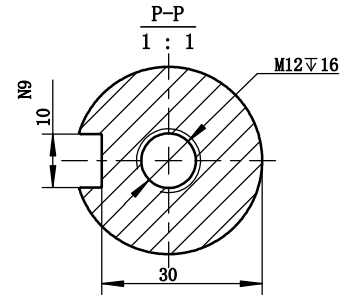
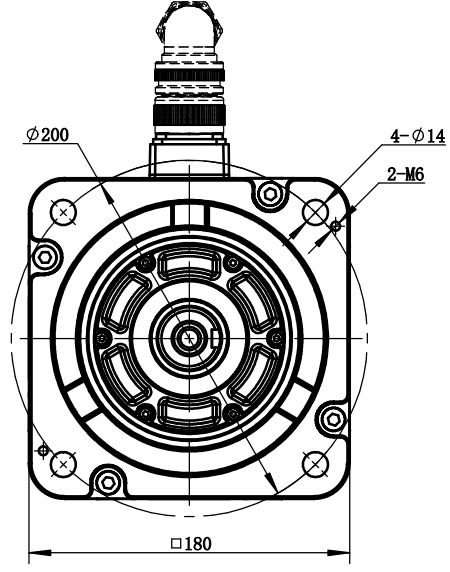
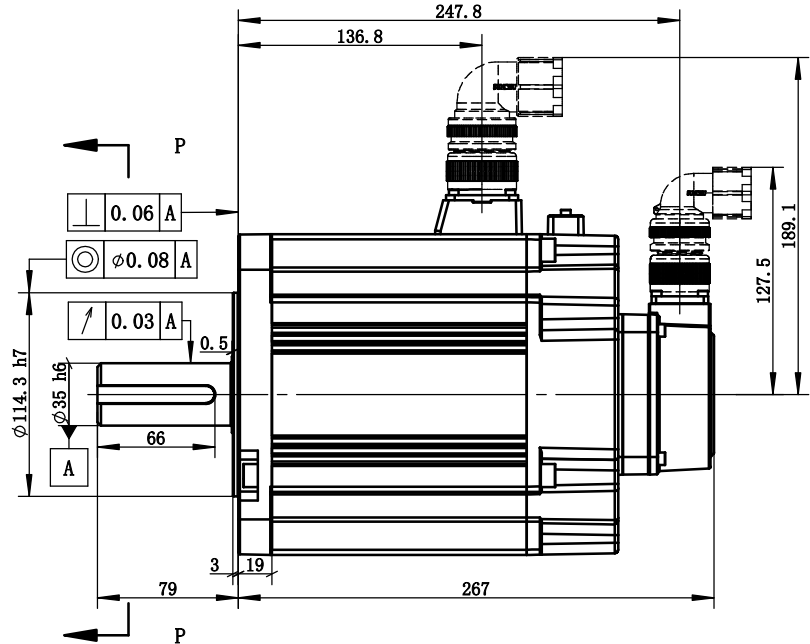
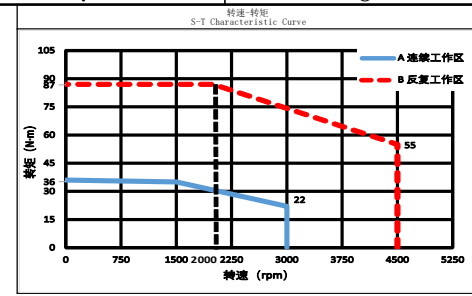
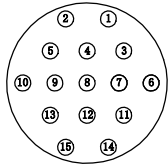
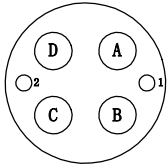


动力引出线 Power Connector				抱闸引出线 Brake Connector		编码器引出线 Encoder Connector								
位号 Terminal Number	A	B	C	D	1	2	1	3	4	6	7	8	9	
颜色 Color	黄绿 yellow-green	蓝 blue	黄 yellow	红 red	红 red	黑 black	屏蔽层 shielding layer	橙 orange	蓝 blue	灰 gray	棕 brown	红 red	绿 green	
定义 Definition	PE	W	V	U	BR+	BR-	屏蔽线 shielding wire	485+	485-	GND	电池- cell-	SV	电池+ cell+	



抱闸属性 Properties of the Brake	
额定电压 Rated Voltage	DC24±10%
静摩擦转矩·m Static Friction Torque	≥58
额定功率 Rated Power	30.25W
吸引时间 Suction Time	≤180(出厂时, 20℃) ≤180(At The Factory, 20℃)
释放时间 Release Time	≤80(出厂时, 20℃) ≤80(At The Factory, 20℃)
吸引电压 Pickup Voltage	≤DC16.8(出厂时, 20℃) ≤DC16.8(At The Factory, 20℃)
释放电压 Release Voltage	≥DC1.5(出厂时, 20℃) ≥DC1.5(At The Factory, 20℃)
回转间隙 Rotational Clearance	<0.5' (20%额定扭矩测试) <0.5' (20% Rated Torque Test)
备注 Remark	保持制动用, 禁止当刹车使用 Used to maintain braking, prohibit the use of brakes
电机参数 Electric Machine Parameter	
型号 Specification And Type	MSG6-180TH15E2Z-45FS
惯量规格 Specification Of Inertia	中惯量 Moment Of Inertia
额定功率kW Rated Power	5.5
额定转矩·m Rated Torque	35
瞬时最大转矩·m Instantaneous Maximum Torque	87.5
额定电流A Rated Current	20.5
瞬时最大电流A Instantaneous Maximum Current	51.25
额定转速rpm Rated Rotation Speed	1500
最高转速rpm Maximum Rotation Speed	3000
转动惯量·kg·m² Rotor Moment of Inertia	100530×10 ⁻⁷
电压等级 Voltage Level	380
编码器规格 Specification Of The Encoder	23bit
径向允许负载N Radial Allowable load	1764
轴向允许负载N Axial allowable load	588
耐压等级 Pressure Class	1800V 60S
绝缘电阻 Insulation Resistance	100MΩ DC500V以上 More Than 100MΩ DC500V
绝缘等级 Class Of Insulation	F
防护等级 Protection Level	IP 67 (不含轴端) IP 67 (Exclude Shaft End)
使用环境温度 Humidity Of Use Environment	20%~90%RH (Non-dewfall)
使用环境温度℃ Operating Ambient Temperature	-10℃~40℃ (不结冰) -10℃~40℃ (Non-frozen)
储存湿度RH Storage Humidity	20%~90%RH (不结露) 20%~90%RH (Non-dewfall)
储存温度℃ Storage Temperature	-20℃~60℃
冷却方式 Cooling Type	自然冷却 Natural Cooling

注: 拿取电机应手握电机壳体本体, 严禁拉拽电动力线、编码器引出线。
严禁敲打电机任何位置, 轻拿轻放。

Note: Take the motor should hold the motor shell body. It is strictly prohibited to pull the power line of the motor and the lead line of the encoder. It is strictly prohibited to tap the motor, take and put it lightly.

1	新归档							
版本 Edition	更改方式 Modifies of the change	日期 Date	签字 Signature	更改说明 Description of the change				
设计 Designed				标准化 Standardized			阶段标记 Stage Mark	
校对 Proofread				会签 Countersign			B	1
审核 Checked				会签 Countersign			27kg	1:3
工艺 Processed				批准 Approved			共 1 张	第 1 张

XINJE 无锡信捷电气股份有限公司
Wuxi Xinje Electric Co., Ltd.

5.5kW伺服电机
MSG6-180TH15E2Z-45FS

